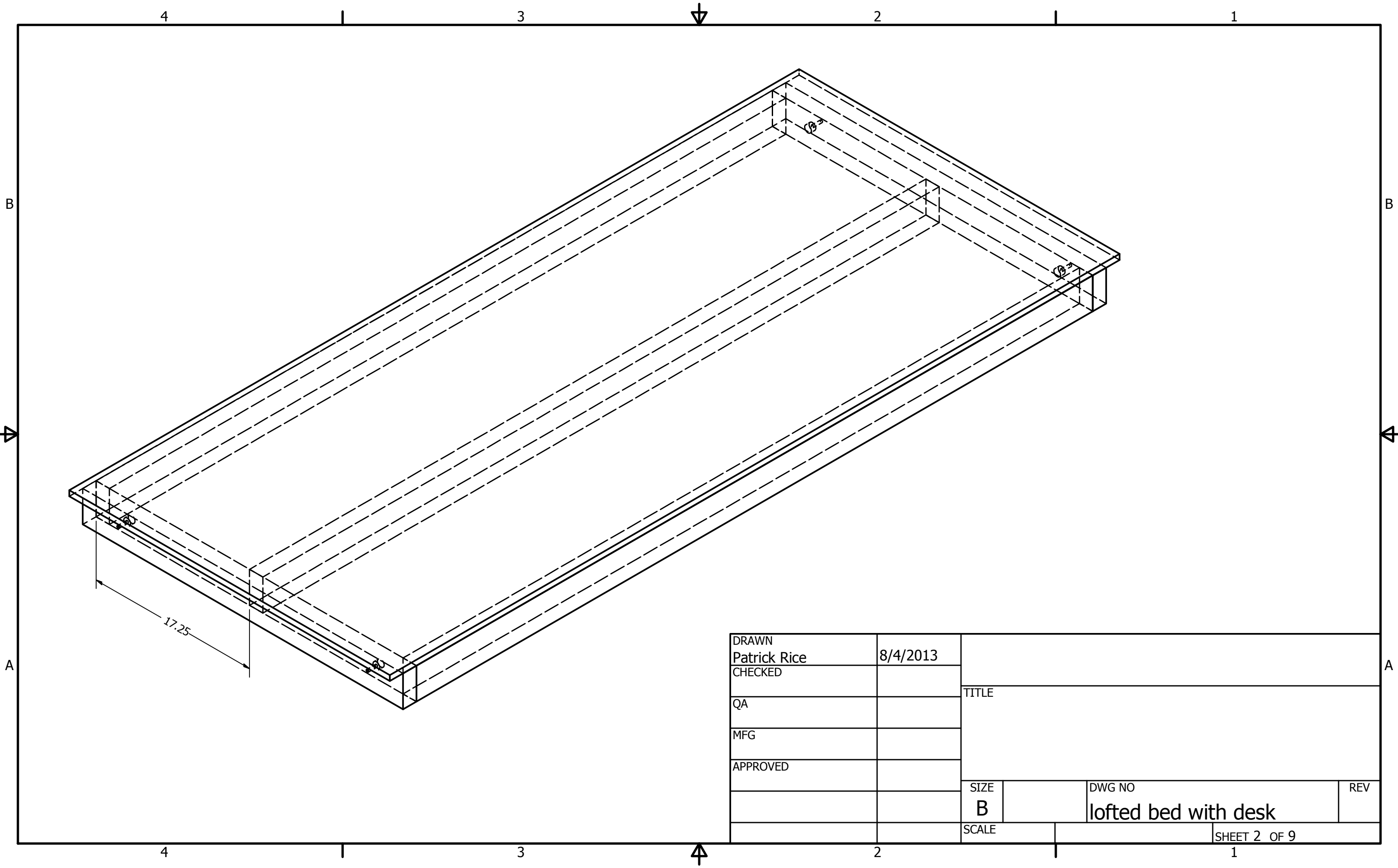
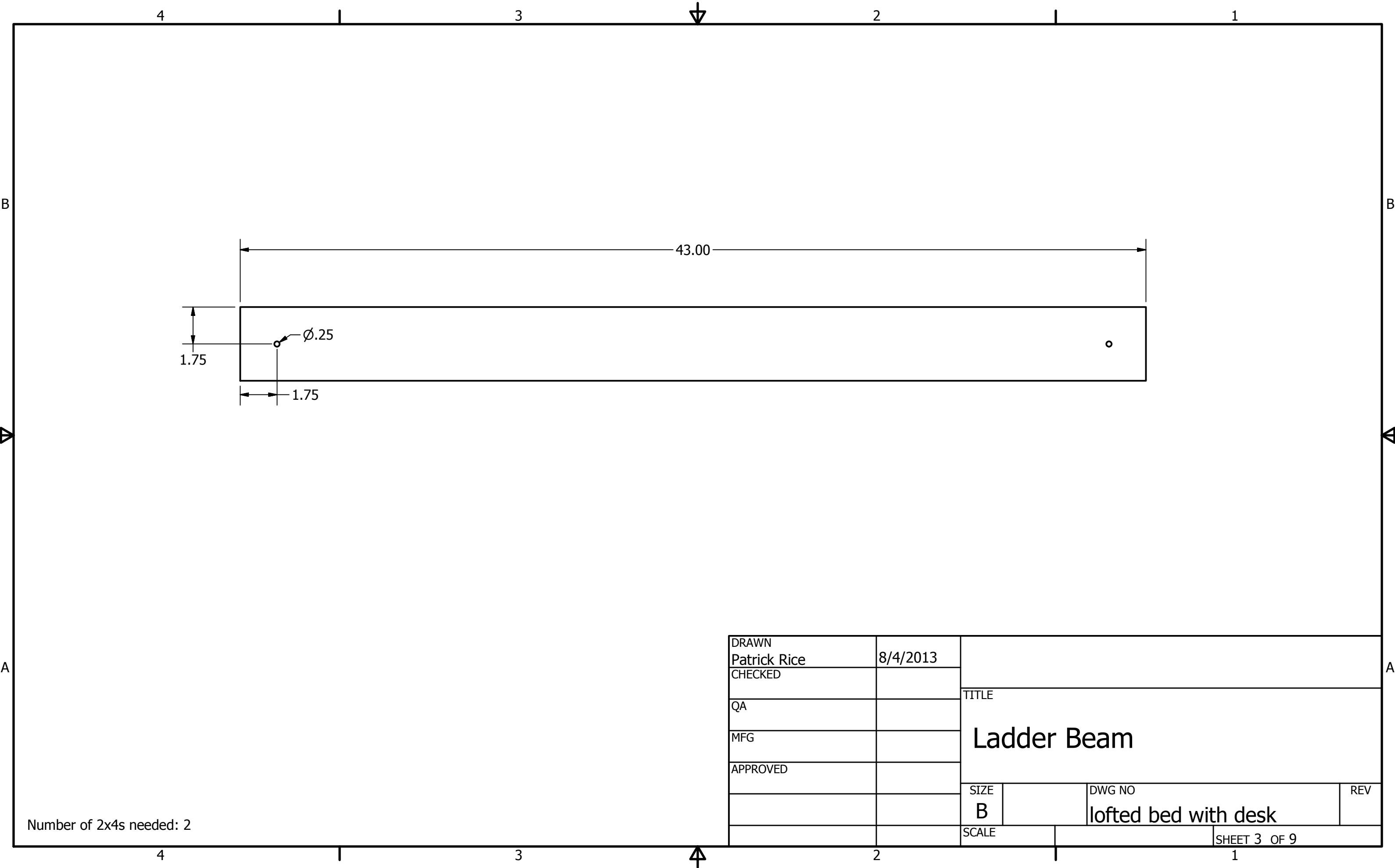


PARTS LIST			
ITEM	QTY	PART NUMBER	DESCRIPTION
3	34	ANSI B18.5 - 1/4-20 UNC - 3	Round Head Square Neck Bolt
23	4	ladder beam	
24	2	ladder beam 2x6	
25	1	table	
26	4	main post 2x4	
27	3	desk cross beam	
28	2	desk support beam	
39	4	crossbeam	
40	1	crossbeam long	

DRAWN Patrick Rice CHECKED QA MFG APPROVED	8/4/2013	TITLE <h2 style="text-align: center;">Desk with Lofted Bed</h2>		
SIZE B				
SCALE		SHEET 1 OF 9		

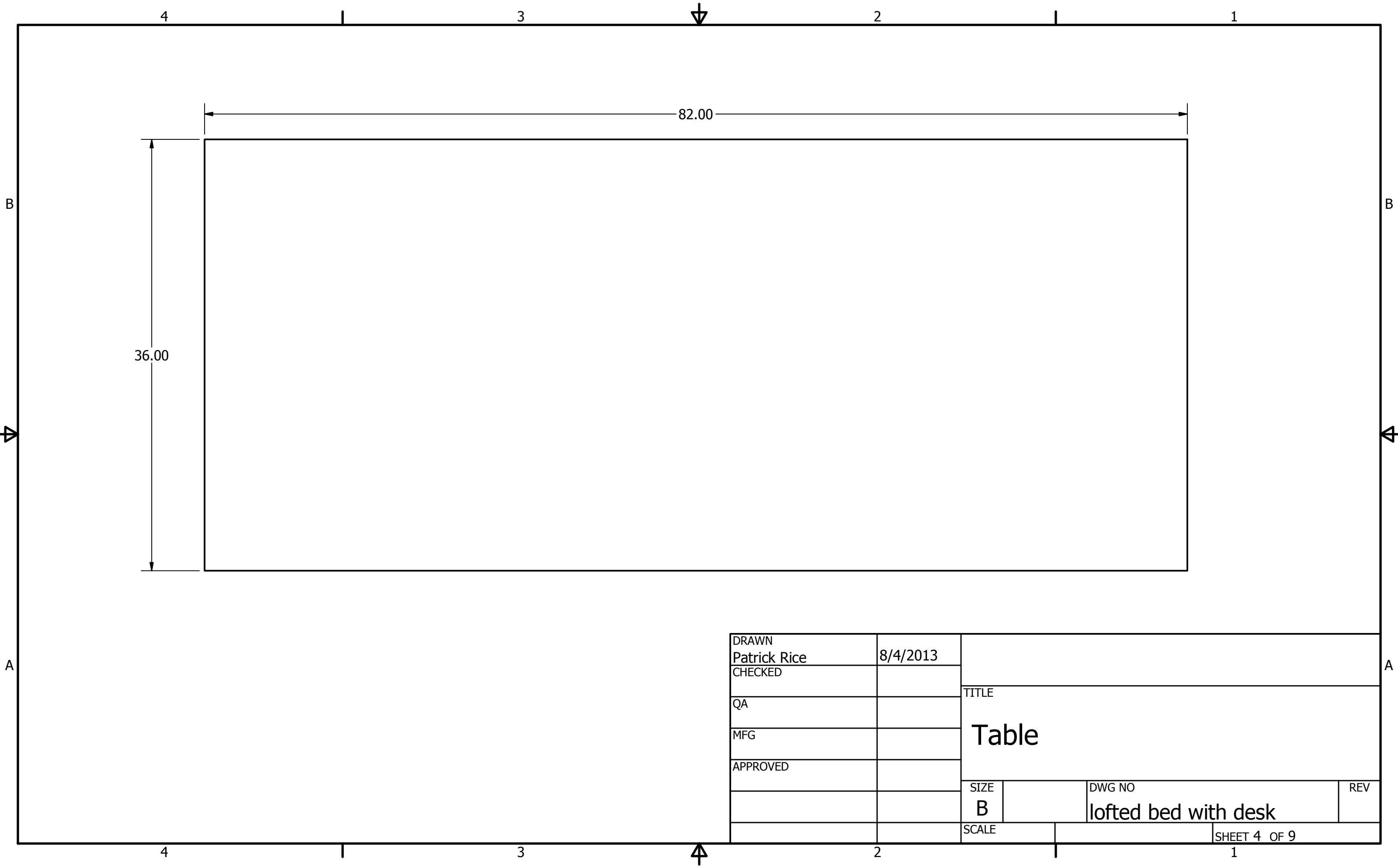


DRAWN	Patrick Rice	8/4/2013			
CHECKED			TITLE		
QA					
MFG					
APPROVED					
			SIZE	DWG NO	REV
			B	lofted bed with desk	
			SCALE	SHEET 2 OF 9	

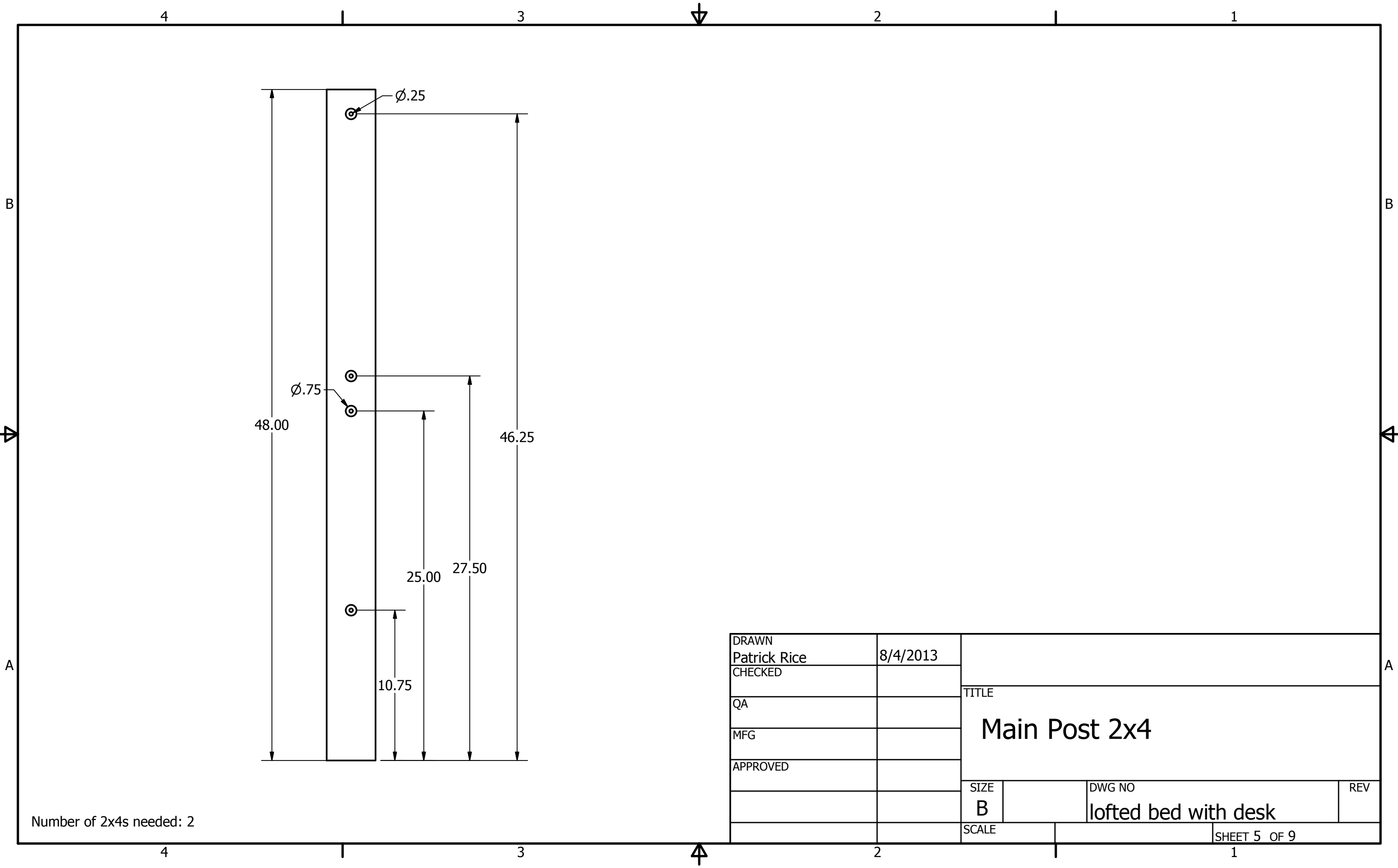


Number of 2x4s needed: 2

DRAWN	Patrick Rice	8/4/2013		
CHECKED				
QA			TITLE	
MFG			Ladder Beam	
APPROVED				
			SIZE	DWG NO
			B	lofted bed with desk
			SCALE	REV
				SHEET 3 OF 9

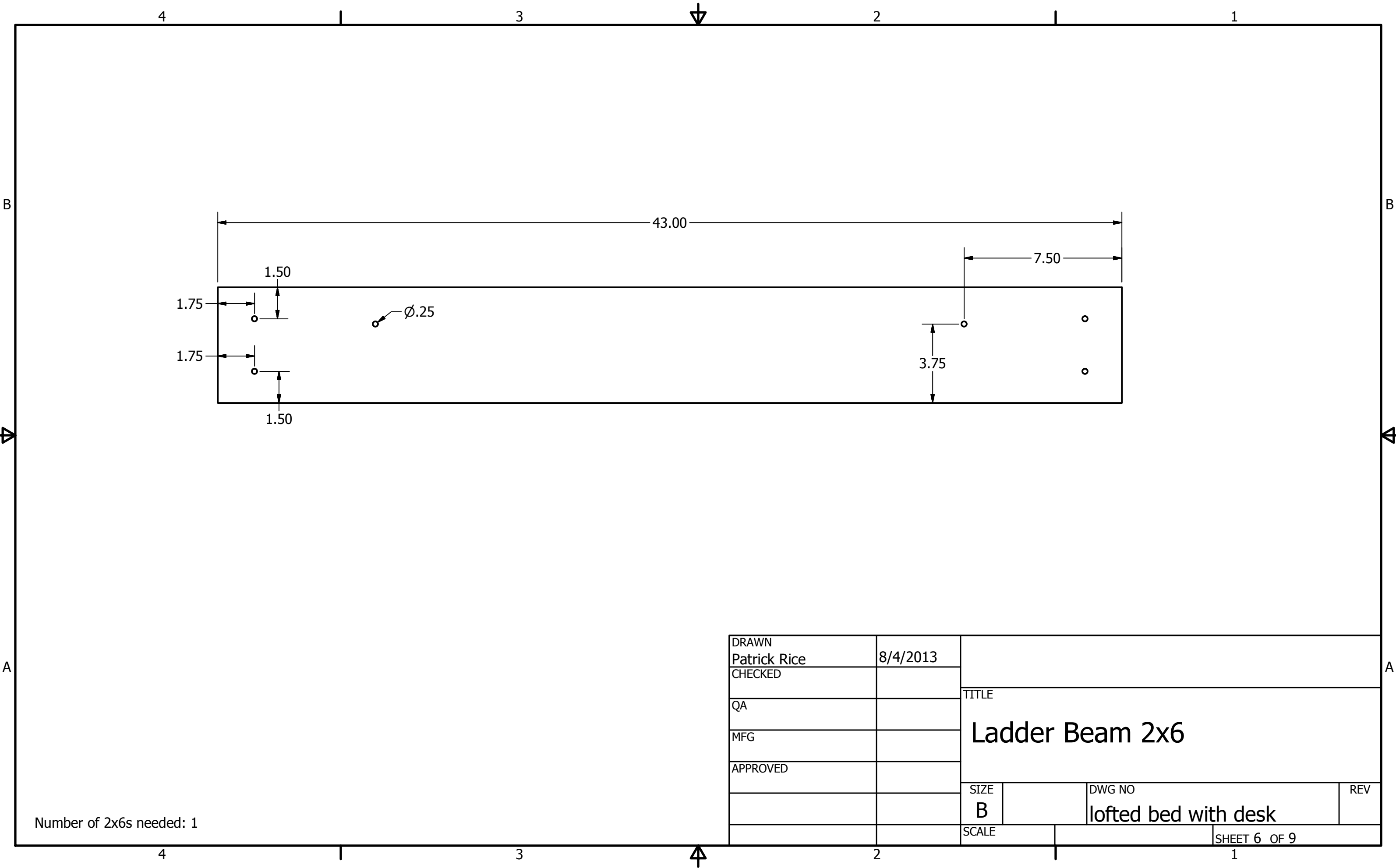


DRAWN Patrick Rice	8/4/2013	TITLE Table		
CHECKED				
QA		SIZE B		
MFG				
APPROVED		DWG NO lofted bed with desk		REV
		SCALE		SHEET 4 OF 9



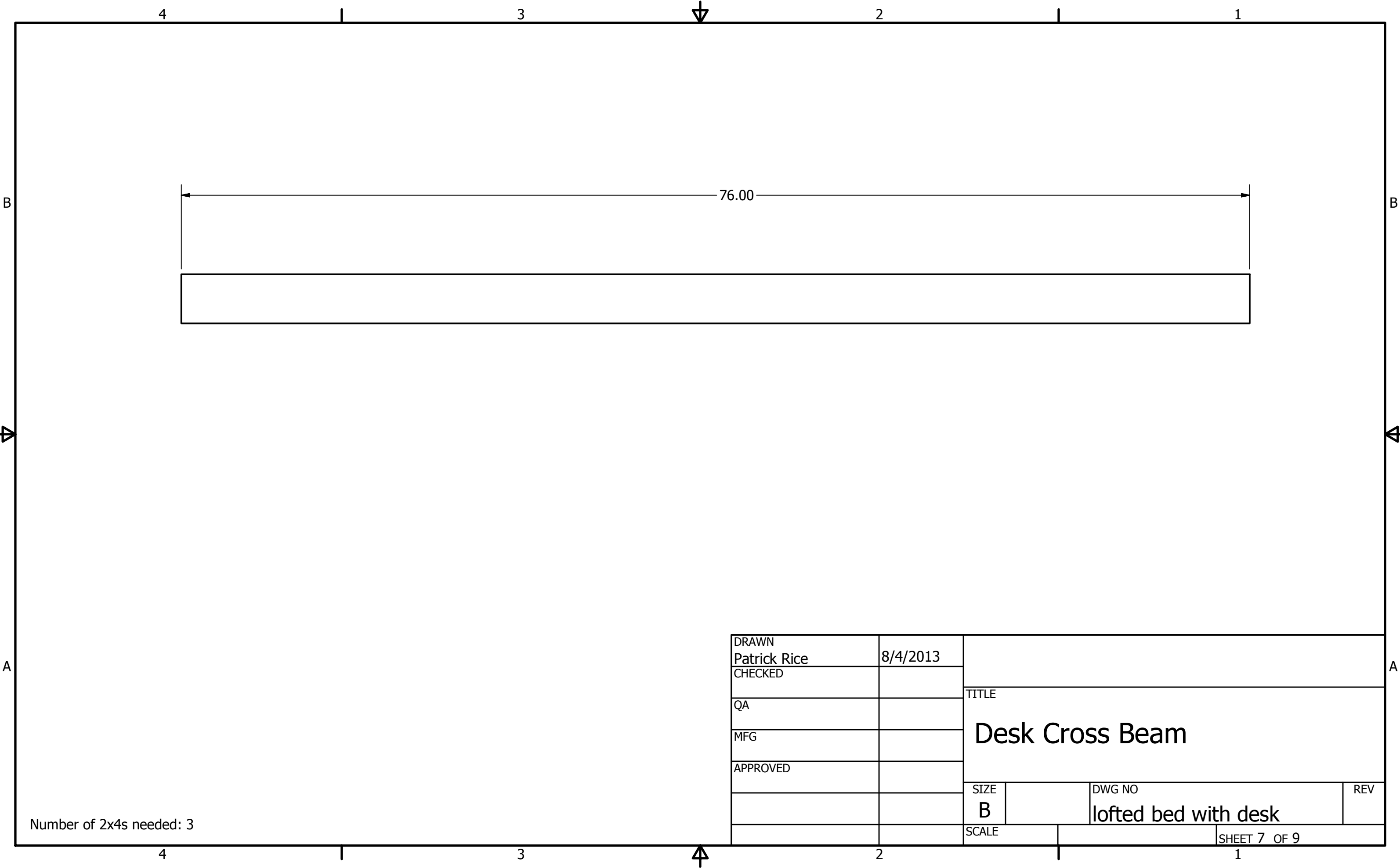
Number of 2x4s needed: 2

DRAWN	Patrick Rice	8/4/2013		
CHECKED			TITLE	
QA			Main Post 2x4	
MFG				
APPROVED			SIZE	DWG NO
			B	lofted bed with desk
			SCALE	REV
				SHEET 5 OF 9



Number of 2x6s needed: 1

DRAWN	Patrick Rice	8/4/2013		
CHECKED				
QA			TITLE	
MFG			Ladder Beam 2x6	
APPROVED				
			SIZE	DWG NO
			B	lofted bed with desk
			SCALE	REV
				SHEET 6 OF 9



B

B

A

A

4

3

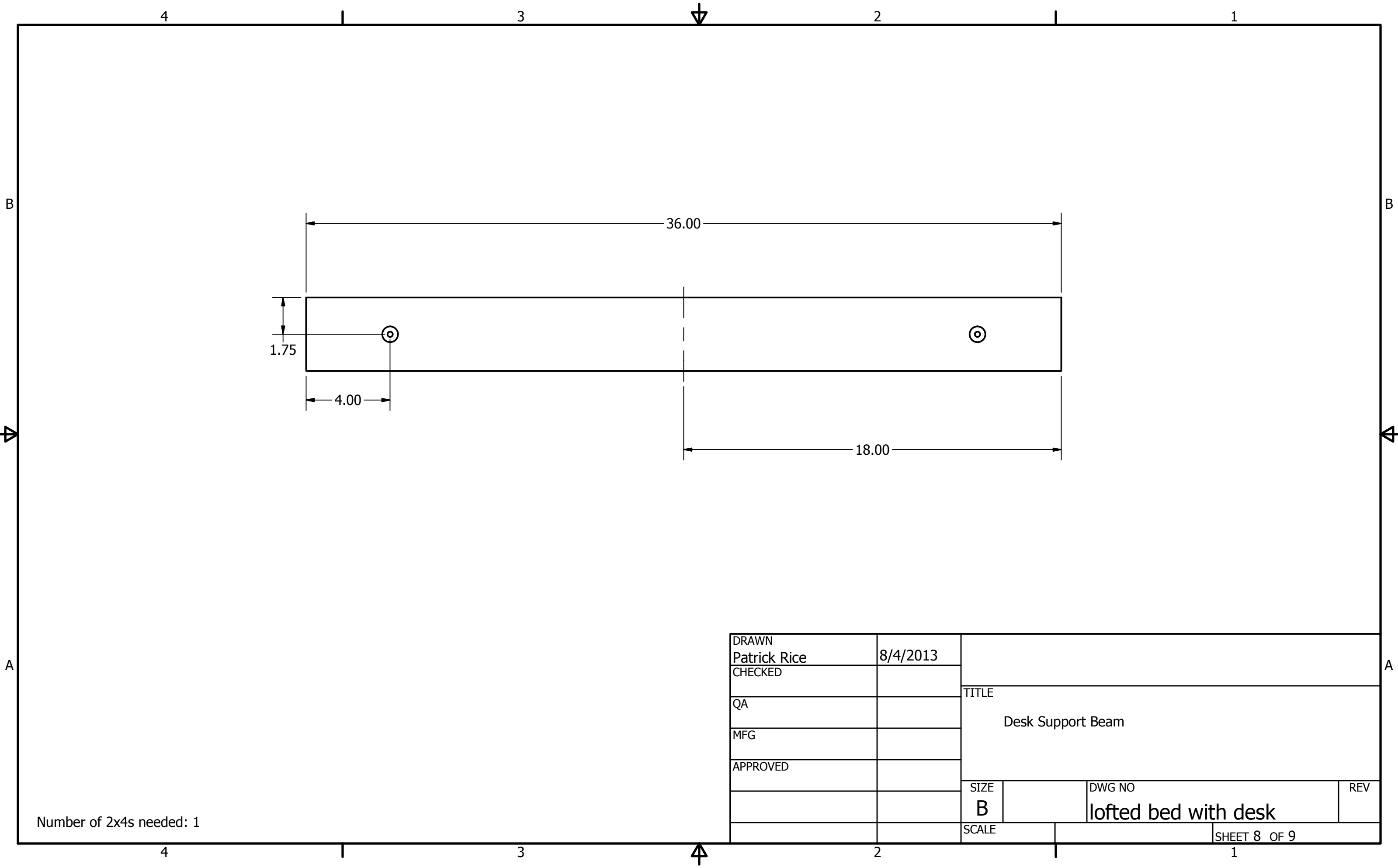
2

1

76.00

Number of 2x4s needed: 3

DRAWN	Patrick Rice	8/4/2013		
CHECKED				
QA			TITLE	
MFG			Desk Cross Beam	
APPROVED				
		SIZE	DWG NO	REV
		B	lofted bed with desk	
		SCALE	SHEET 7 OF 9	



Number of 2x4s needed: 1

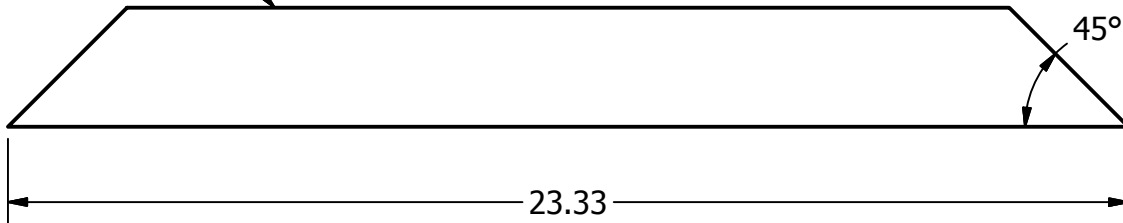
DRAWN	Patrick Rice	8/4/2013	TITLE Desk Support Beam		
CHECKED					
QA					
MFG					
APPROVED			SIZE	DWG NO	REV
			B	lofted bed with desk	
			SCALE	SHEET 8 OF 9	

2

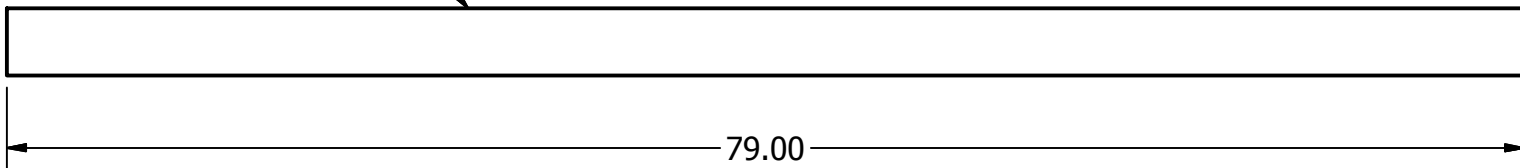


1

Underdesk X4



Overdesk X1



DRAWN	Patrick Rice	8/4/2013
CHECKED		
QA		
MFG		
APPROVED		

TITLE			
Cross Beams			
SIZE		DWG NO	REV
A		lofted bed with desk	
SCALE			SHEET 9 OF 9

2X 96" 2x4

2



1

B

B

A

A